



SMS Server

[BACK](#)

SMS Premium is a feature packed Desktop Simple Message Service Server System that offers individuals or Small and Medium size Enterprises excellent SMS capability to communicate with customers effectively.

The system consists of one SMS gateway modem (which is as small as a thumb drive) and software that runs on Window XP, Window Vista and Window 7.

Features of SMS Premium:

- Send mass but personalized SMSes to customers in both English and Mandarin
- Schedule SMSes to be sent at any date and time
- Group contacts in unlimited number of groups.
Each contact can belong to unlimited number of groups and yet receive only one SMS during SMS broadcast to every groups
- Customer name, membership number, age and birthday can be inserted in respective SMS
- Preview of all outgoing SMSes before sending.
- Conform to anti-spamming regulation
Automatically mark the phone number in phonebook as "unsubscribed" when customer replies "un"
- Unobstructive and can be hidden in your system tray when running.
- All incoming and outgoing SMSes are archived into text files
- Allow turning on or off notification bubble from system tray when new SMS received.
- Automatic download of latest software when new features are added
- Info Kiosk function
Auto-reply to incoming SMS. (eg. Opening hours, promotion information, customer's bonus points etc)

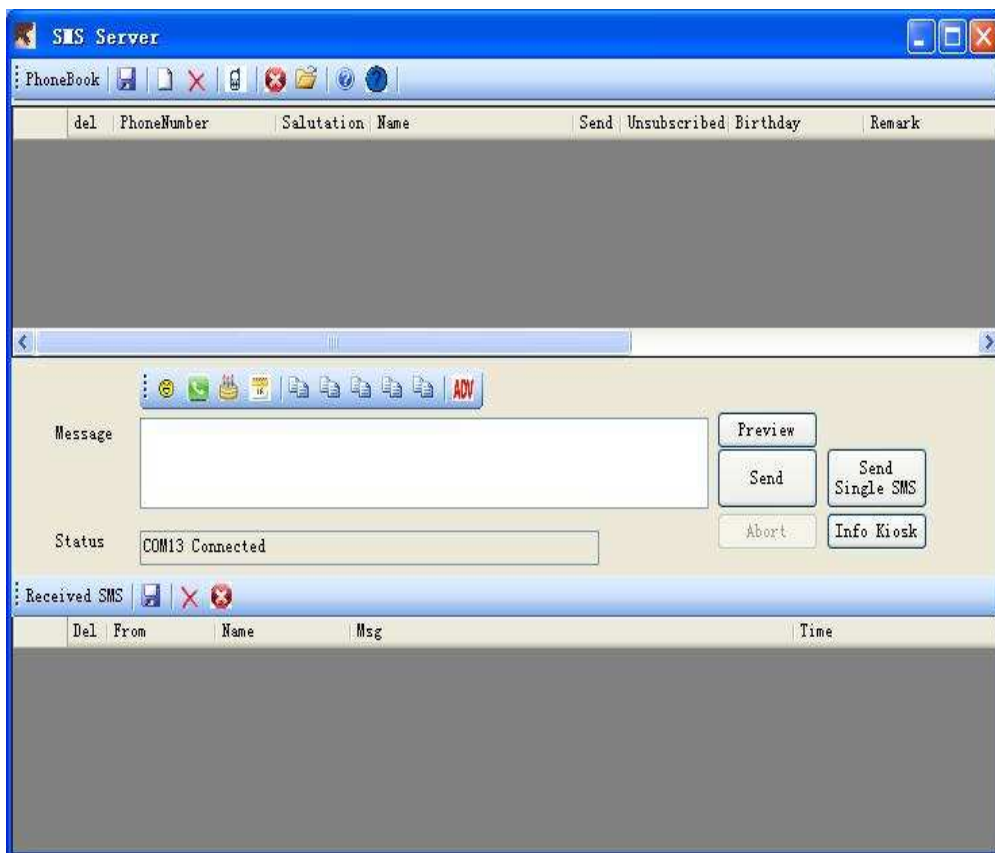
SMS PREMIUM INTERFACE WINDOW:



Features of SME SMS Server:

- Send mass but personalized SMSes to customers in both English and Mandarin
Customer name, salutation, membership number, age and birthday can be inserted in respective SMS
- Preview of all outgoing SMSes before sending.
- Conform to anti-spamming regulation
Automatically mark the phone number in phonebook as "unsubscribed" when customer replies "un"
- Can download phone numbers from your mobile phone SIM card
- Can export phonebook and received SMSs into text files for archival
- Automatic download of latest software when new features are added
- Info Kiosk function
Auto-reply to incoming SMS. (eg. Opening hours, promotion information, customer's bonus points etc)

A TYPICAL SMS SERVER INTERFACE WINDOW:



Features of Enterprise SMS Server:

- Runs on your enterprise server
- Connect using COM module
- Comes with .NET 4.0 SDK
- Optional Clients connection through TCP/IP over LAN

Console of SMS Enterprise Server



Features of Quiz and Display SMS Server:

- A must have for SMS event organizers.
- It comes with a 'Quiz' module and a Display Module.
- 'Quiz' module works with one SMS gateway modem (which is as small as a thumb drive) and receive all incoming SMSes.
- Moderator at computer running 'Quiz' module can block any unwanted SMSes to be displayed on the computer running the 'Display' module.
- Both modules run on Window XP, Window Vista and Window 7.

Screen of Quiz Moderator

